

Building a Data System to Evaluate The Prosecutor's Early Intervention Program (PEIP)

Ray Biggar, Ph.D.

Jing Chen, M.S.

Craig Forsyth, Ph.D.

Cecil J. Picard Center for Child Development
and Lifelong Learning

American Evaluation Association

Presentation

29 October 2016

Atlanta, Ga



Research on juvenile crime and delinquency indicate the following:

- Many chronic offenders start their criminal career prior to age 12
- For some, serious aggressive behavior begins as early as 10
- Early risk factors of delinquency may appear among boys as young as five



The 16th JD District Attorney's office

- PEIP identifies high risk kids (eligible for FINS complaint)
- Reduces at risk factors early
- At the same time increases protective factors through targeted and tertiary interventions



Grounded in Control Theory

Identifies Risks and Protective Factors

Poverty and Other Stressors

Poor Academic Performance

Substance Abuse

Peer Delinquency

Peer Rejection

Antisocial Attitudes

Congruent with current
juvenile justice reform
policies

Emphasis on diversion and rehabilitation

Reduced disproportionality



Poor attachment to primary caregiver(s) can lead to global disengagement (academic, peers, etc.)

PEIP is a conduit between the home, school, service agencies and the legal system to identify at-risk children that diverts youth to services ***before they enter into the juvenile justice system***



Pilot Study (16th JD)

Getting the Law Involved (Wright, McMahon, Daily and Haney, 2012)

- Reduces Truancy
- Improves in Emotional and Behavioral Strength
- Improves grades and reduces suspensions



The initial success of the PEIP generated interest in other JD's. By 2011 the program had expanded to five additional districts.

However, little was known (Outside of the 16th JD), about the program structure ,data collection, and fidelity/implementation of essential program elements across districts.

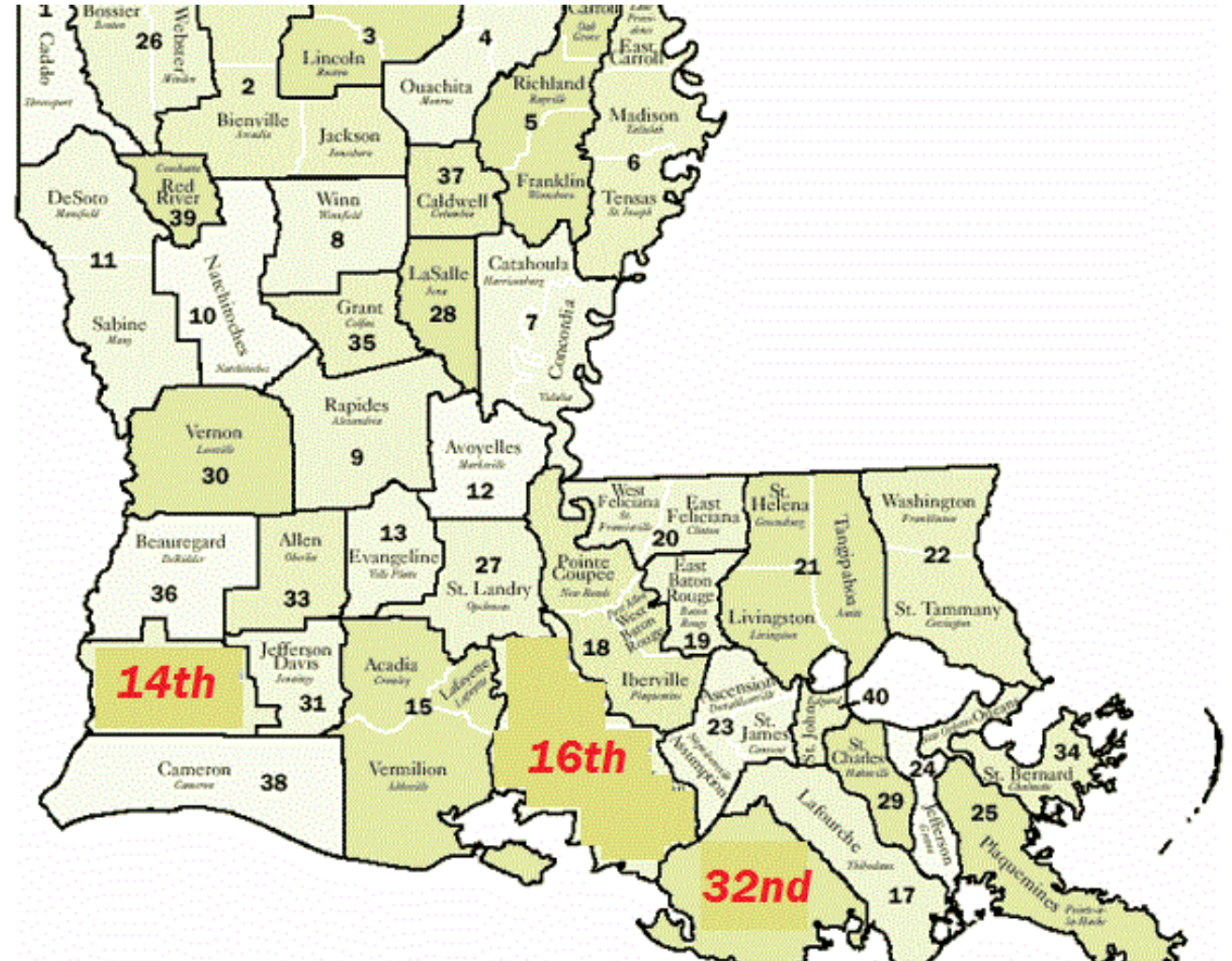


LDA A Mission:

To improve Louisiana's justice system and the office of District Attorney by enhancing the effectiveness and professionalism of Louisiana's District Attorneys and their staffs through education, legislative involvement, liaison, and information sharing.

PEIP System Pilot Sites

- 14th Judicial District (Calcasieu)
- 16th Judicial District (Iberia, St. Mary, St. Martin)
- 32nd Judicial District (Terrebonne)

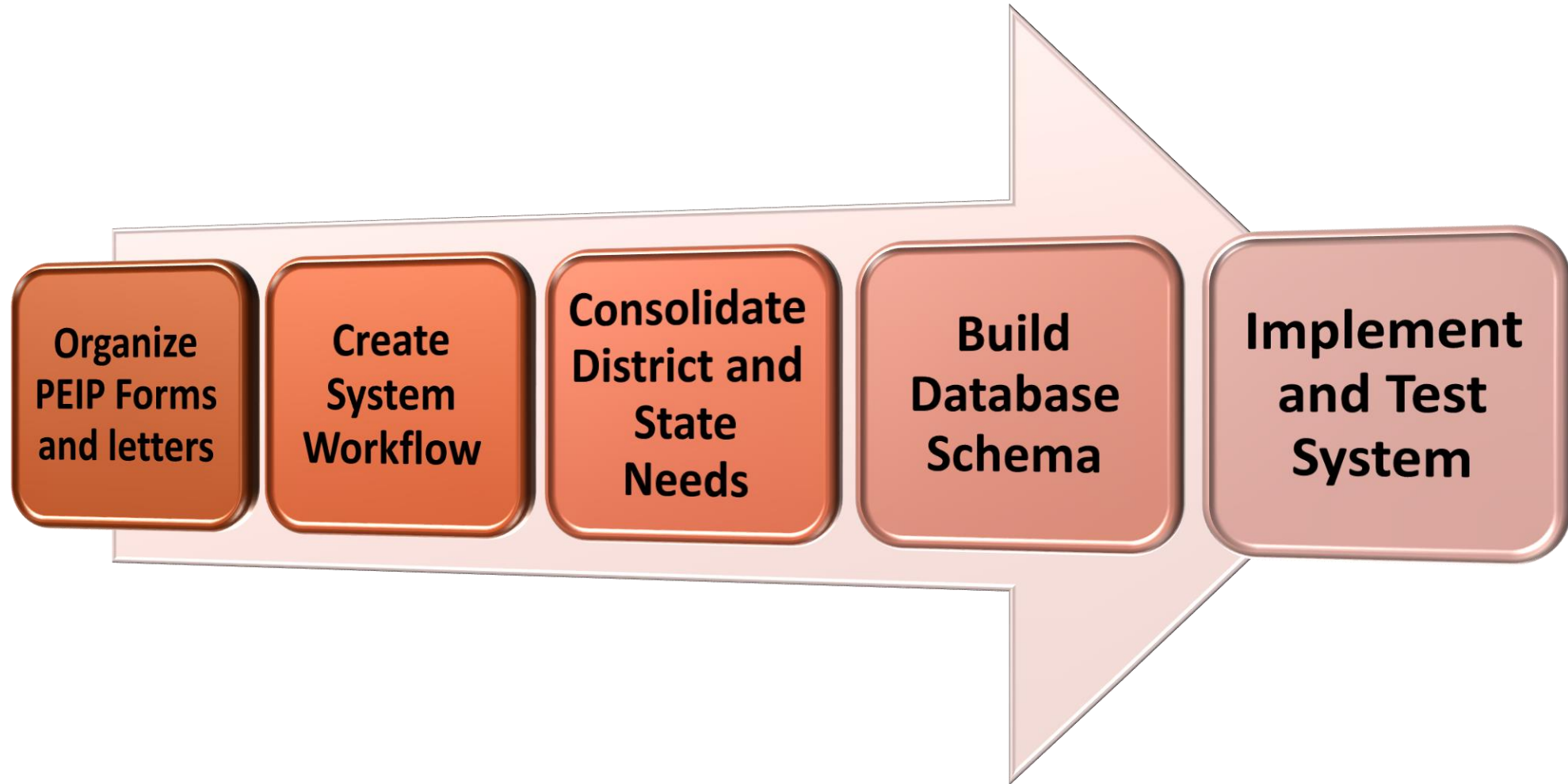


Picard Center for Child Development and Lifelong Learning-

- Builds the online tool
- Process evaluation (Program fidelity in all districts)
- Training & technical assistance



Building The PEIP Data System



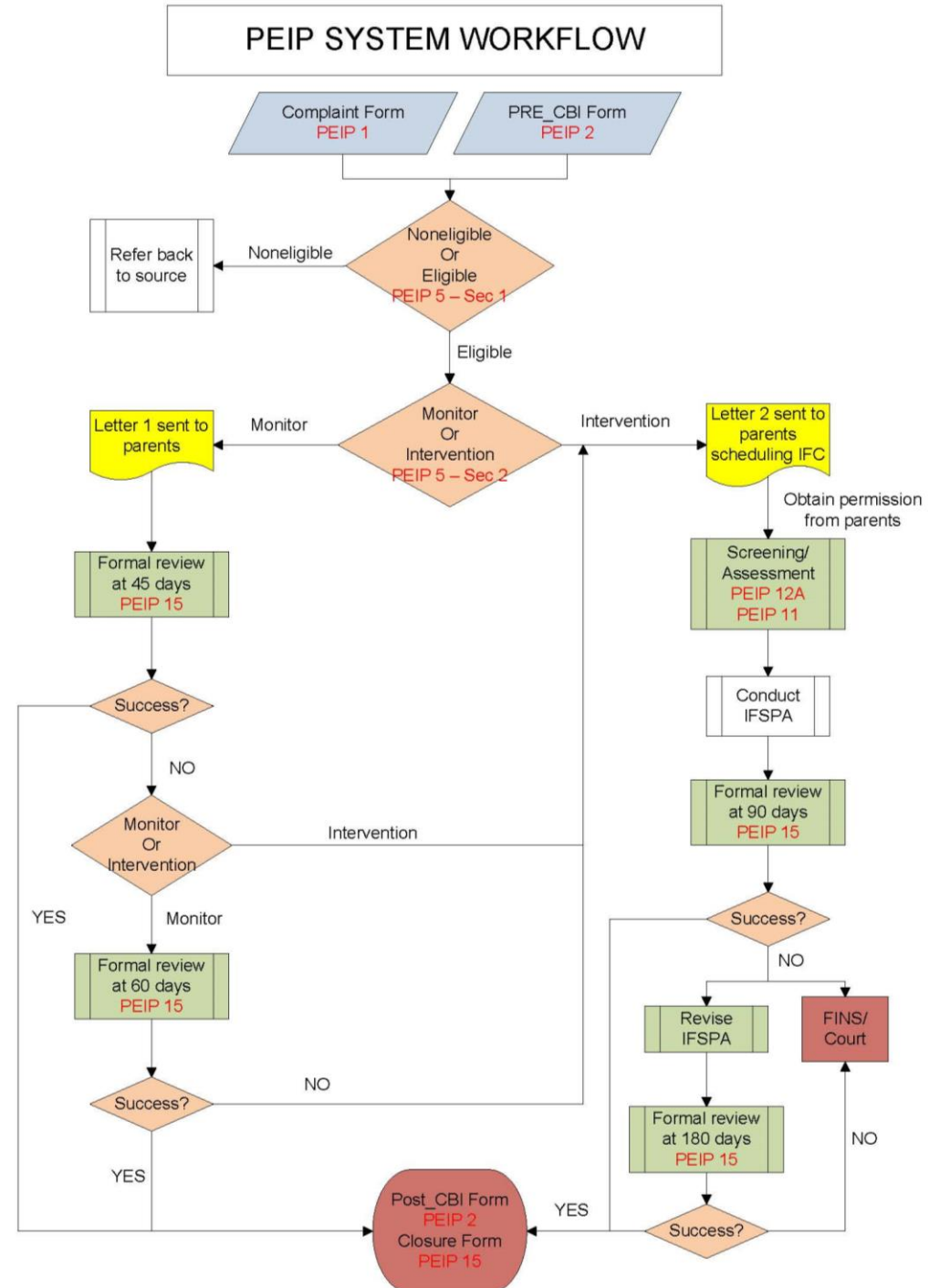
Step 1 - Organize PEIP Forms and Letters

- Referral
- Classroom Behavior Inventory (CBI)
- Eligibility
- Classification
- Assessment
- Informal Family Services Plan Agreement (IFSPA)
- Closure
- Others

Form Name	PEIP
Refer Form	PEIP-1
Pre-CBI	PEIP-2
PEIP Contact Sheet/Progress Notes	PEIP-4
Eligibility and Classification Form	PEIP-5
Function letter1	PEIP-7
Parent Interview Form (Part)	PEIP-9
Consent Letter	
IFSPA	PEIP-11
Conference Summary Sheet	PEIP-12A
Extension Form	PEIP-15A
Review/Closure Form	PEIP-15B, PEIP-15C
Premature Closure Form	PEIP-15B, PEIP-15C
Post-CBI	PEIP-15D
Summary of service (Report)	PEIP-16
Request for Staffing	PEIP-22A
Violation of FINS	PEIP-22B
Violation of Court	PEIP-22C

Step 2 - Create System Workflow

- Electronic case
- Management system
- Data collection system
- Resource directory



Step 3 - Consolidate District and State Needs

Judicial District Codes

- Unique to each Judicial District
- Created by individual JD
- Dynamic

Code	Description	Type
FFT	Functional Family Therapy	Family Services
MST	Multisystem Therapy	Family Services
CBT	Cognitive Behavior Therapy	Student/Mental Health Services
TFCBT	Trauma Focused Cognitive Behavior Therapy	Student Services
ART	Aggression Replacement Training	Student Services
MI	Motivational Interviewing	Student Services
JIFF	Juvenile Inventory for Functioning	Assessment
MAYSI-2	Massachusetts Youth Screening Instrument	Assessment
CCON	Check and Connect	Student Services
CICO	Check In Check Out	Student Services
SASSI-A	The Adolescent Substance Abuse Subtle Screening Inventory	Assessment
CO	Completed	Service Status
FD	Family Declined	Service Status
IP	In Progress	Service Status
WL	Waiting List	Service Status
NT	No Transportation	Service Status

Step 3 - Consolidate District and State Needs

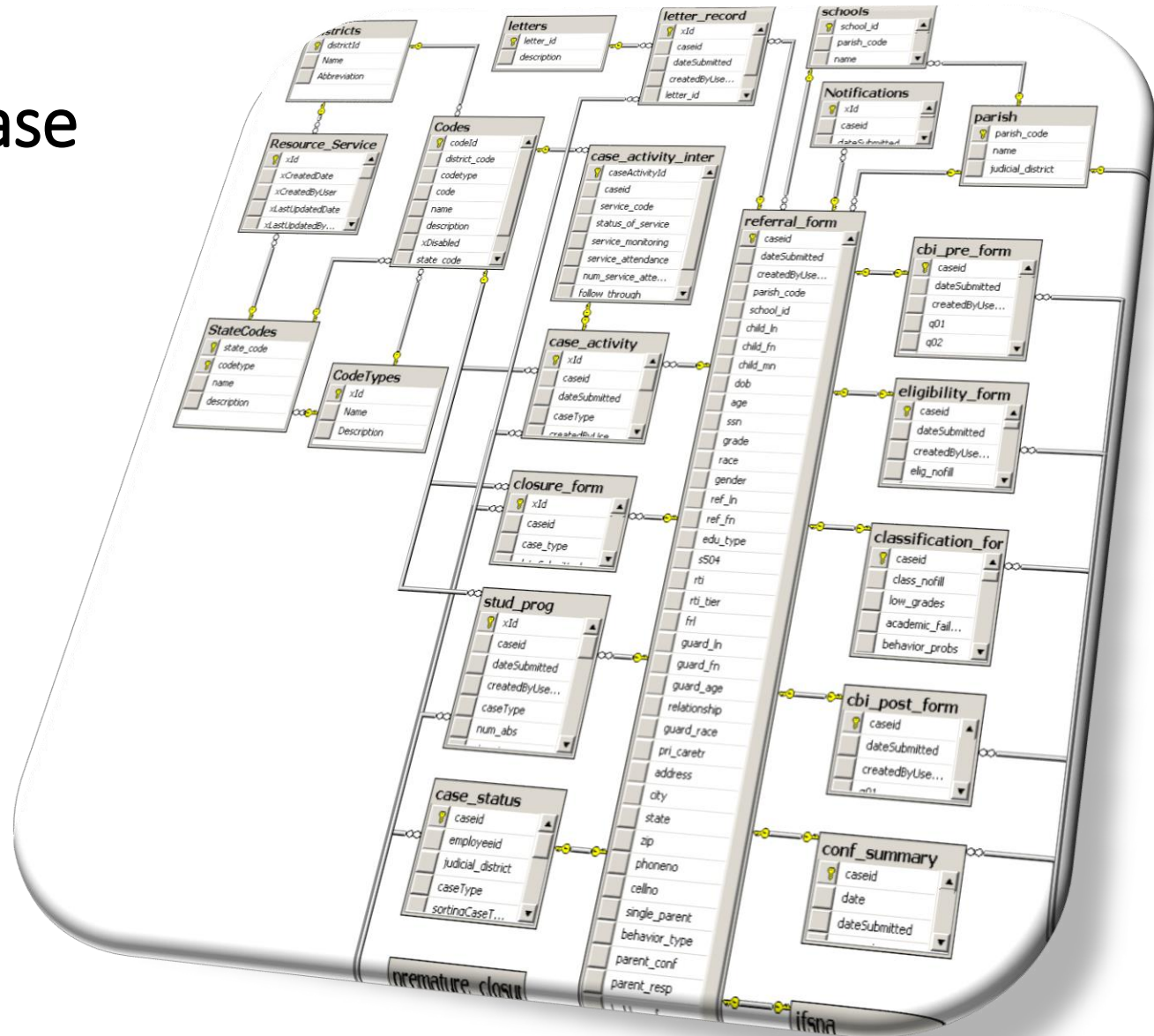
State Codes

- Same to each Judicial District
- Created by LDAA
- Unchangeable

Category	Code
Disposition	DISP
Monitoring Case Management	MONCM
Intervention Case Management	INTCM
Medical Service	MEDSERV
Social Service	SOC SERV
Family Service	FAM SERV
Student Service	IND SERV
Assessment/Screening	ASSESS
Mental Health Service	MH SERV
Parental Service	PAR SERV
Other Service	OTH SERV
Service Status	STAT SERV
Service Outcome	OUT SERV
Case Status	CAS STAT
Case Closure	CAS CLOSE
IFSPA	SPA

Step 4 - Build Database Schema

- 47 Tables
- 842 Columns
- Number, Date, Text, Files



Step 5 – Implement and Test System

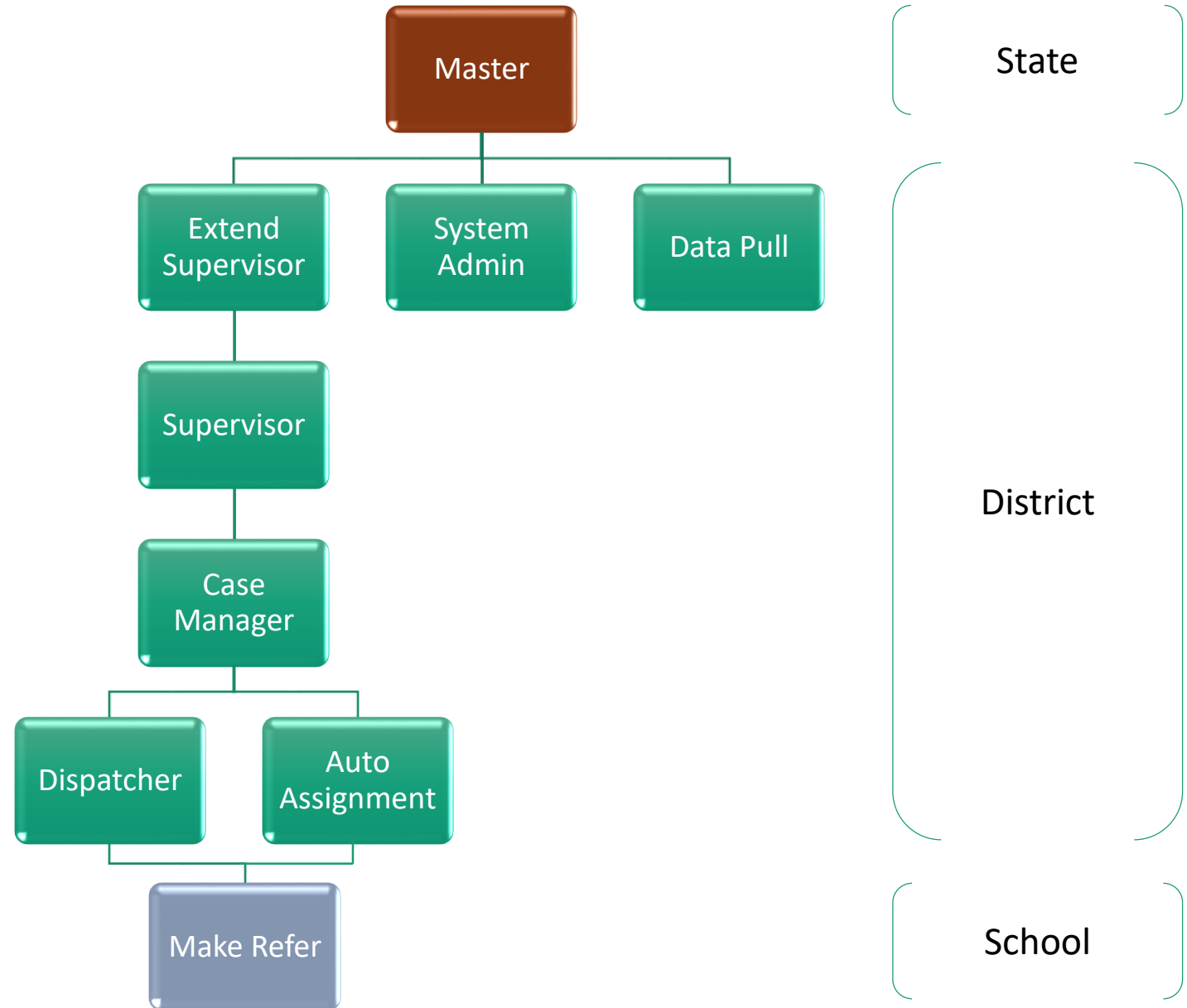
Roles in PEIP System

System Admin:

- User Management
- Case Management
- Code Management
- Resource Management

Supervisor:

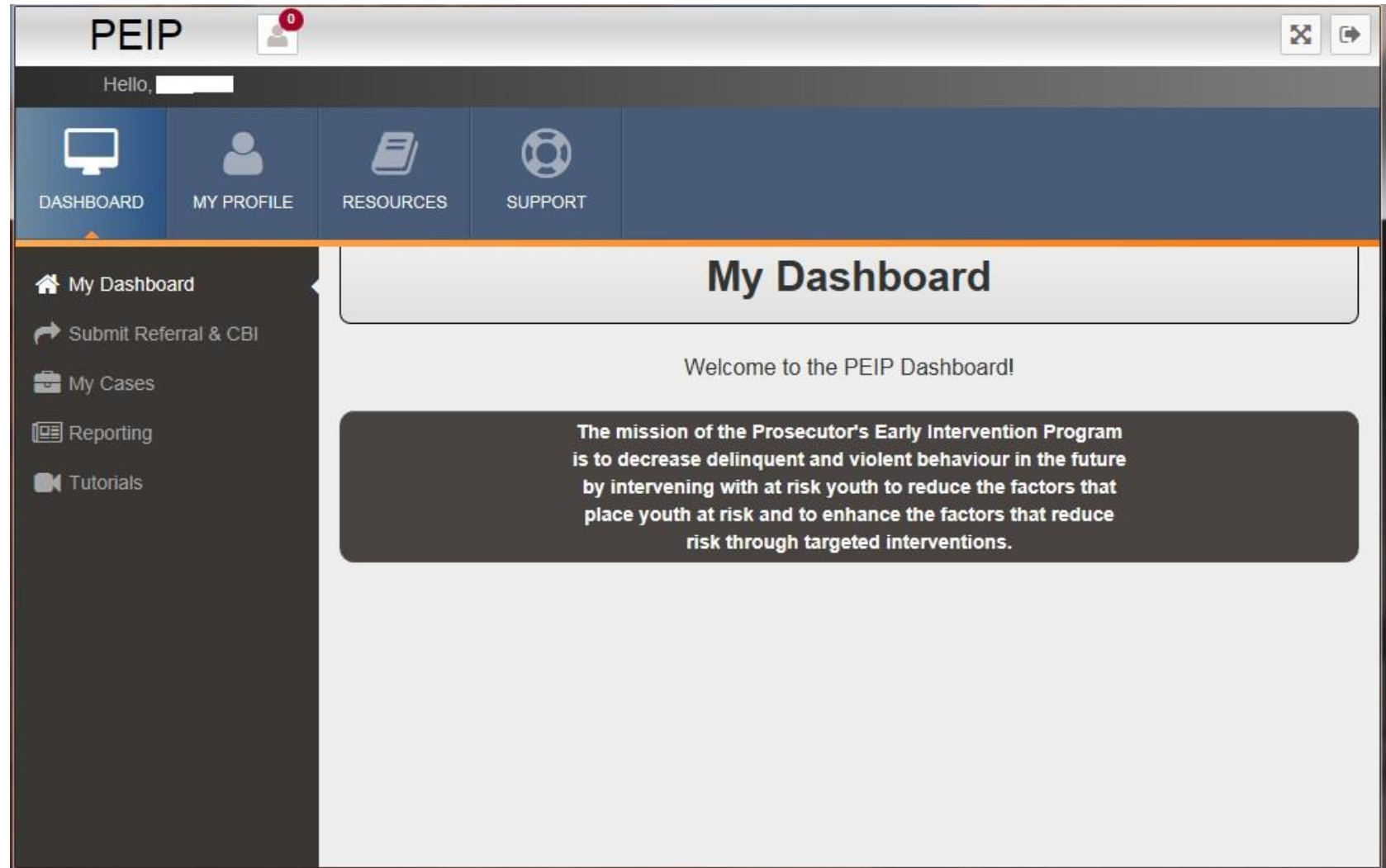
- Assign Employees
- Case Manager
- Reporting



Step 5 – Implement and Test System

Case Manager Dashboard

- Notifications
- Dashboard Link
- My Profile
- Resources
- Support
- Submit Referral & CBI
- My Cases
- Reporting
- Tutorials



Step 5 – Implement and Test System

My Case

- Help icon
- Filter function
- Sort function
- Color

DASHBOARD

MY PROFILE

RESOURCES

SUPPORT

My Dashboard

Submit Referral & CBI

My Cases

Reporting

Tutorials

My Cases

My Cases ?

Case Filter Options

Case Status: All

Case Type: All

School: All

Year Submitted: All

School Year (Startng Year): All

Student: All

Student Name ^	School —	Parish —	School Year —	Case Type —	Active —	Date Submitted —	Date Last Updated —	Flagged for Clo
	School		2015	INT	Closed	6/7/2016 2:33:25 PM	7/22/2016 11:04:42 AM	No
	School		2015	INT	Closed	6/7/2016 9:09:12 AM	10/17/2016 10:23:06 AM	No

Step 5 – Implement and Test System

Reporting

- Multiple Reports
- Filter function
- Sort function
- Color

Reporting

Reports:

- Case Report (Case Manager)
- Student Progress Report (Case Manager)
- Case Activity Monitoring Report (Case Manager)
- Case Activity Intervention Report (Case Manager)**
- Case Manager Report

Case Activity Intervention Report (Case Manager)

From Date:

To Date:

School Year:

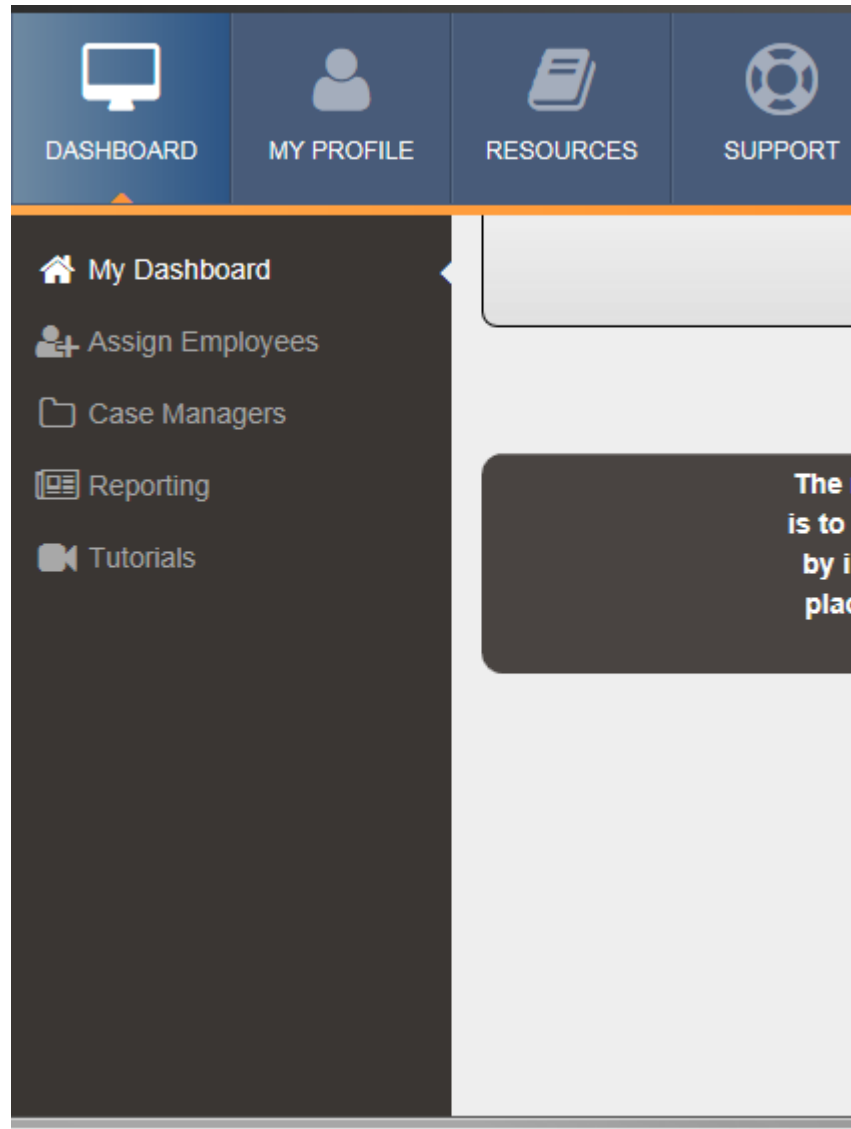
Student Names:

Grade:

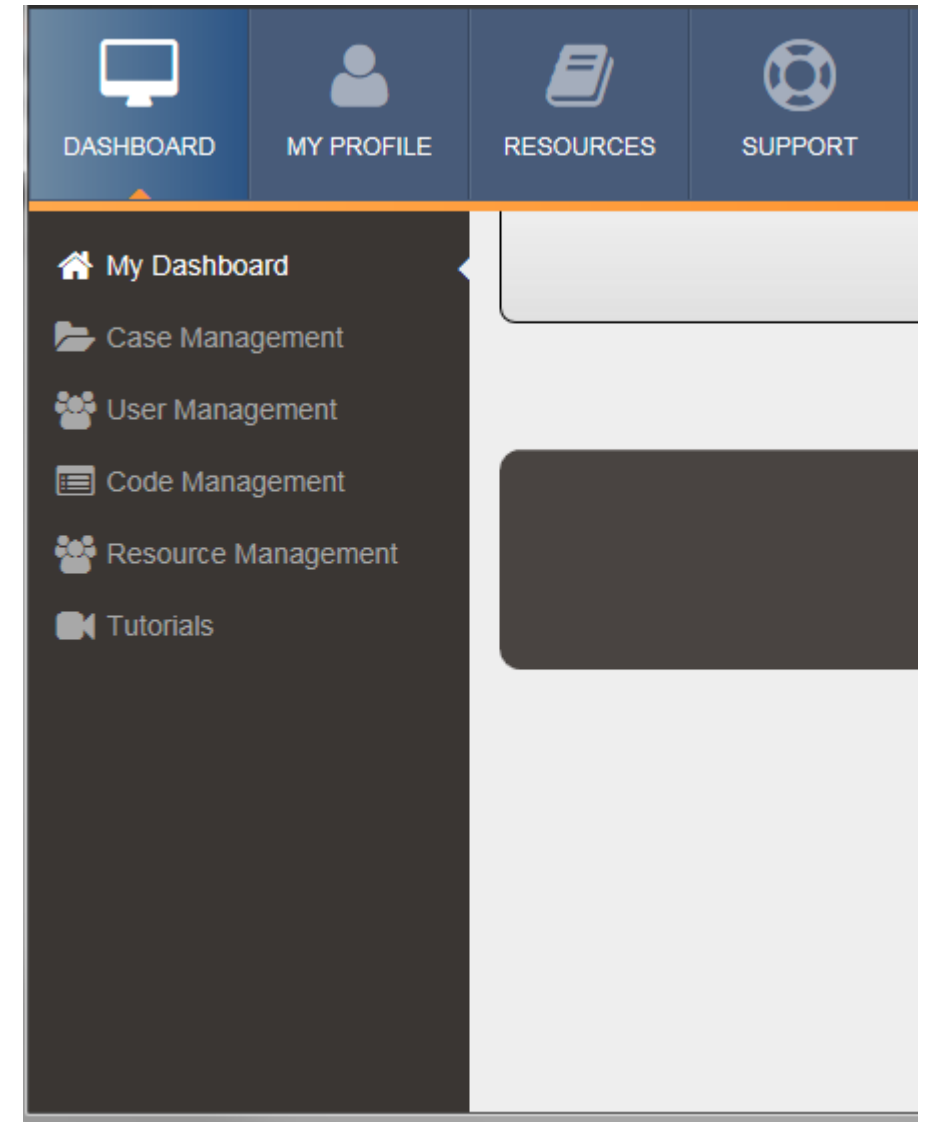
Manager Name	Referral Date	Case Activity Date (Paper)	Case Activity Submitted Date	Case Type	Monitoring Code
toAssignCase	N/A	N/A	6/7/2016	INT	N/A
toAssignCase	N/A	9/14/2016	9/15/2016	INT	N/A
r Only	N/A	N/A	6/8/2016	INT	N/A

Step 5 – Implement and Test System

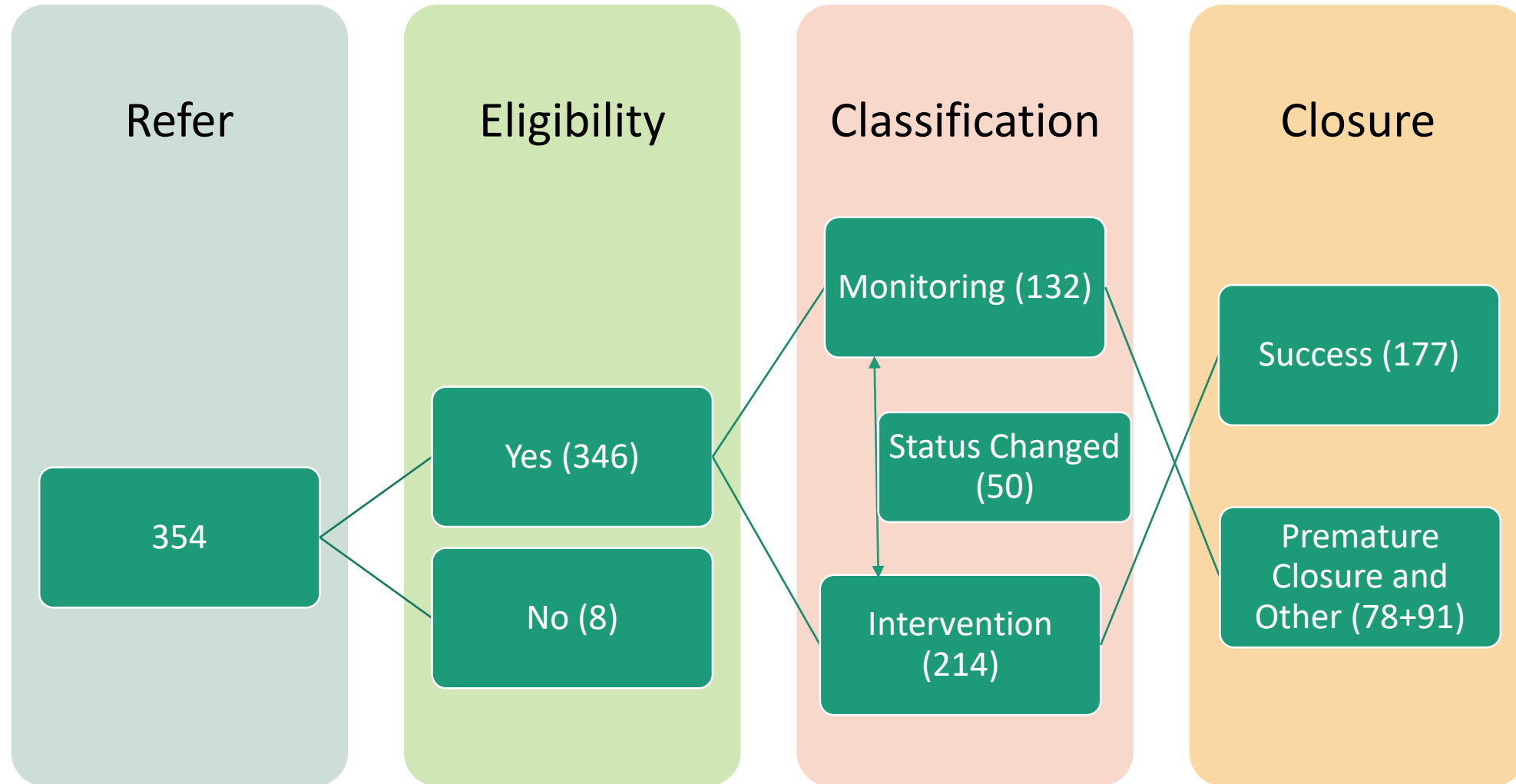
Supervisor



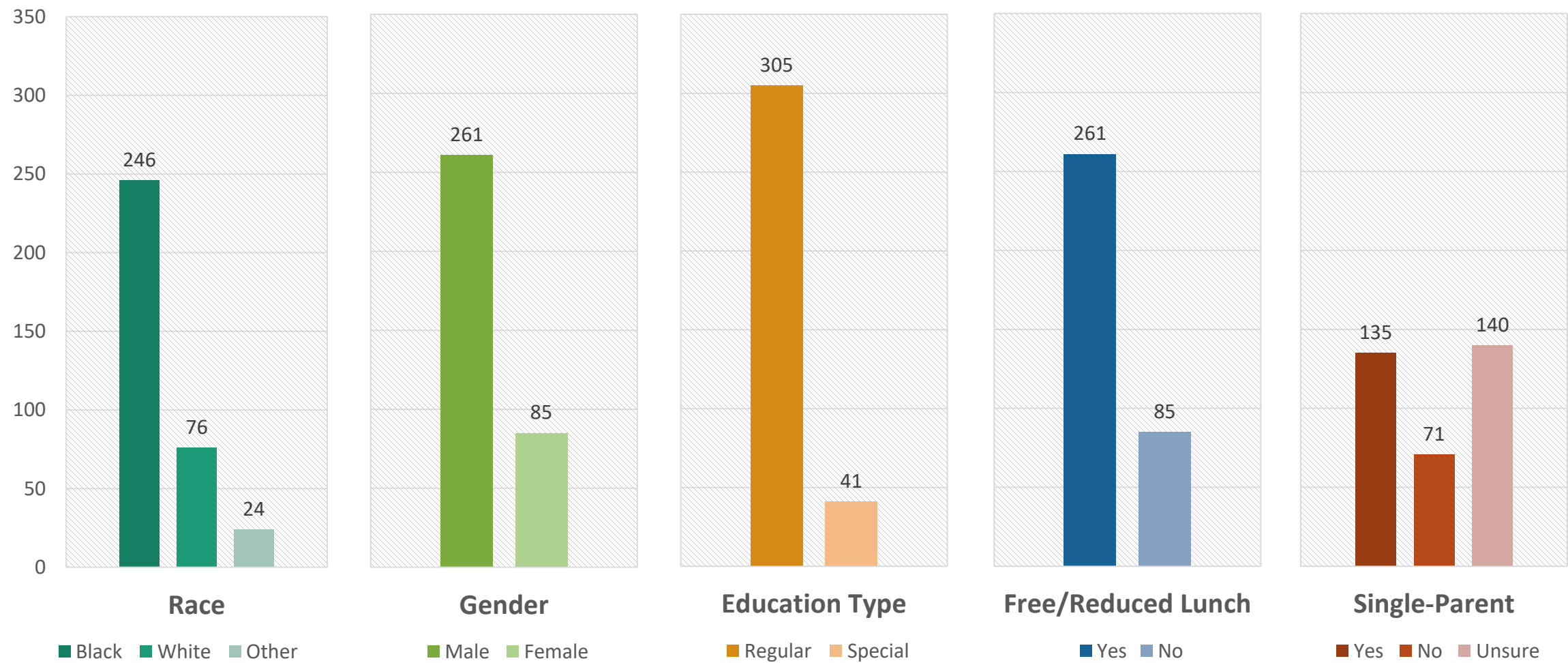
System Admin



2015 – 2016 School Year Data Summary



2015 – 2016 School Year Data Summary



System Training

Old habits die hard!
It takes persistence
of the learner and
trainer.



Juvenile Justice Reform

- Increased objectivity of sentencing and detention
- Reduced racial/ethnic disproportionality
- Identification of needs
- Increased access to evidence-based services
- Rehabilitation in lieu of punishment



Rigorous Program Evaluation, Results, and Dissemination

Future Evaluations

- Program fidelity
- Outcomes
- Data management
- Systems management

Results & Dissemination

- Website
- Online tutorial
- Scholarly articles
- Formal presentations
- Expansion to other JDs
- Statewide implementation
- Evidence-base best practice